





















Looking at some data!

Working Statement
Data are presented for periods other than fiscal years.

| | 2012/2011 | 2011/2010 | 2010/2009 | 2009/2008 | 2008/2007 |
|------------------|-------------|-------------|-------------|-----------|-----------|
| Revenue | \$1,234,567 | \$1,123,456 | \$1,012,345 | \$901,234 | \$790,123 |
| Operating Income | \$234,567 | \$123,456 | \$12,345 | \$1,234 | \$123 |
| Net Income | \$123,456 | \$67,890 | \$7,890 | \$890 | \$90 |
| EPS | \$1.23 | \$0.67 | \$0.08 | \$0.09 | \$0.01 |

60% Growth

112% Growth



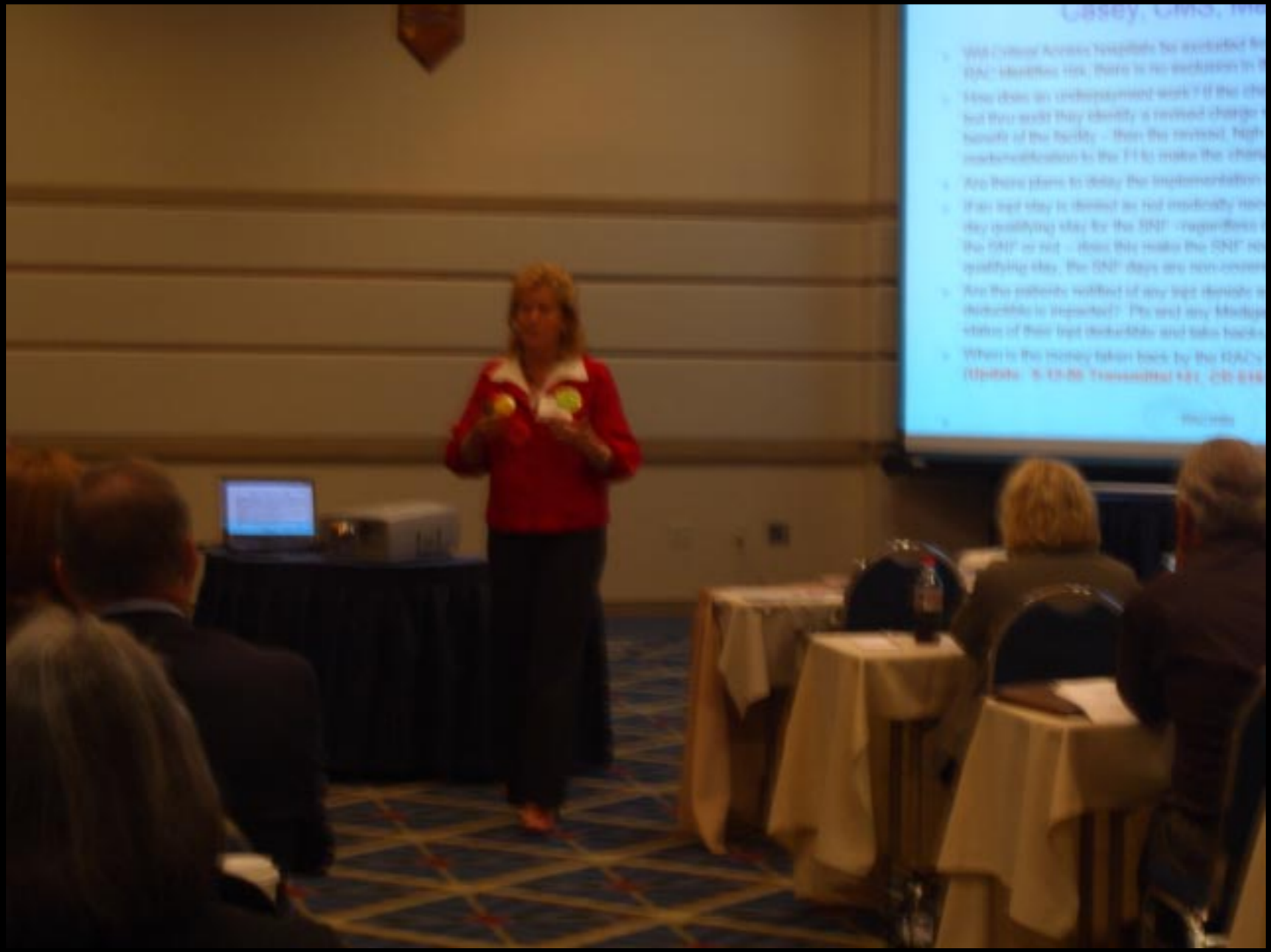
Looking at some

Financial Statements
Data are presented by periods other than fiscal year

| | 2010 | 2011 |
|--------------------------|---------------|---------------|
| Revenue | \$100,000,000 | \$160,000,000 |
| Operating Expenses | (40,000,000) | (48,000,000) |
| Total Operating Expenses | (40,000,000) | (48,000,000) |
| Total Operating Income | \$60,000,000 | \$112,000,000 |
| Operating Expenses | (40,000,000) | (48,000,000) |

60%
Growth

112%
Growth



Casey, CMS, Inc.

- Will Critical Access Hospitals be included in the IDA? Identify risk, there is no mechanism to...
- How does an enhancement work? If the effort but they would they identify a revised charge? Benefit of the facility - then the revised, high market-value to the F1 to make the effort...
- Are there plans to delay the implementation?
- If an opt day is decided to not immediately start, they qualifying day for the ONP - regardless of the ONP or not - does this make the ONP not qualifying day, the ONP days are now covered...
- Are the patients notified of any opt outside of discharge is reported? Do not any Medicaid status of their opt discharge and take back?
- What is the money taken back by the IDA? (10/10/10 - 5-15-10 Transmittal 101, 200-010)



